

**For Immediate Release**

**29 August 2018**

## **Quittapahilla Watershed Association to Unveil Long-Term Restoration Plan**

The Quittapahilla Watershed Association (QWA) has announced a public presentation of its recently completed Watershed Implementation Plan (WIP), a guide for the next 20 and more years for grant-funded work to improve the water quality in the watershed and reduce the amounts of sediment and pollution flowing into the Chesapeake Bay.

The free public presentation by Rocky Powell of Clear Creeks Consulting will begin at 7:00 p.m. on Wednesday, September 26 in the Annville Town Hall at 36 N. Lancaster St. in Annville. (Photo: Rocky Powell on the north bank of a now-restored section of Quittie Creek just upstream of the Rt. 934 bridge, Dec. 2015).



“We’re excited to unveil our WIP, which is basically a roadmap for future restoration efforts in our lovely but injured little watershed,” said Michael Schroeder, QWA President. “We’re grateful to Rocky Powell for all his hard work, and to our partners in this process, especially The Lebanon Valley Conservancy, the Doc Fritchey Chapter of Trout Unlimited, and the Biology Department at Lebanon Valley College.”

Funded by a \$26,250 Growing Greener grant in 2016 from the Pennsylvania Department of Environmental Protection, the WIP builds on nearly 20 years of study and planning to develop a detailed plan, to be implemented and monitored over the next two decades, for a series of restoration projects along Quittapahilla Creek’s principal tributaries, namely Beck Creek, Snitz Creek, Bachman Run, Killinger Creek, and Gingrich Run.

The WIP excludes those portions of the Quittapahilla watershed that fall under the jurisdiction of the Lebanon County Stormwater Consortium, comprised of six municipalities working to comply with the PA-DEP’s mandates for MS4. Those six municipalities are the City of Lebanon, North Cornwall Township, North Lebanon Township, South Lebanon Township, Cleona Borough Authority, and Annville Township.

The WIP also excludes waterways in two MS4-mandated municipalities that opted not to participate in the Consortium, which are Cornwall Borough and South Annville Township.

MS4 stands for Municipal Separate Storm Sewer Systems. MS4 requirements are mandated by the Clean Water Act of 1972 and later additions and amendments and enforced by PA-DEP as required by the U.S. Environmental Protection Agency.

The accompanying map shows the Quittapahilla watershed with the Consortium areas in purple. The WIP includes all the areas not in purple. The ten areas with red text and circles show the locations of nine proposals for PA-DEP Sunoco penalty grant projects, submitted in June of this year, and a project about to begin on the Lower Snitz Creek, spearheaded by Doc Fritchey Trout Unlimited and funded in part by a 2017 grant from the PA Fish & Boat Commission.

Fieldwork for the first systematic scientific studies of the Quittapahilla watershed were undertaken in the years 2000 and 2001 by Rocky Powell, culminating in his 2006 multi-volume report. The WIP is based on that 2006 report and more recent field assessments of the watershed's principal impairments, most related to agriculture and livestock.

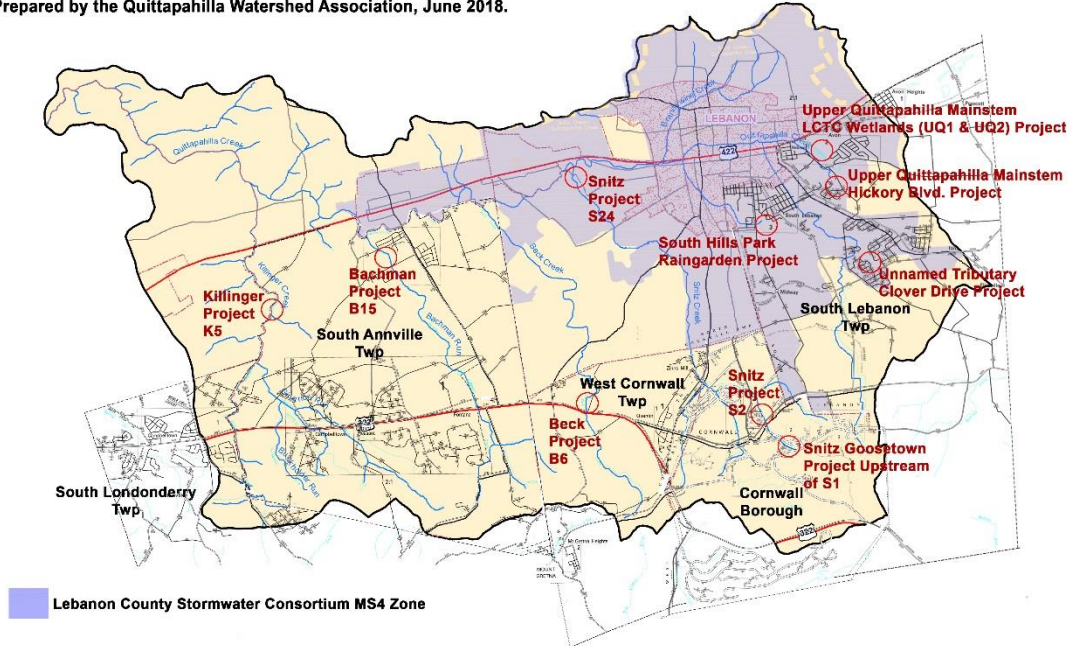
Included in the WIP are plans for public participation and education – part of what this public meeting is intended to achieve – and for pre- and post-restoration monitoring, to be undertaken in part by students supervised by Dr. Rebecca Urban, Associate Professor of Biology at Lebanon Valley College.

The 2018 WIP and the 2006 multi-volume report, along with previous and subsequent studies and documents, are housed on the “Studies & Documents” page of the QWA website, at [www.quittapahillawatershedassociation.org](http://www.quittapahillawatershedassociation.org).

## Projects to Improve the Water Quality in the Quittapahilla Watershed

Showing Urban Areas in the Lebanon County Stormwater Consortium MS4 Zone (purple area), Municipalities Eligible for PA-DEP Sunoco Penalty Grant Funding (South Londonderry Twp, South Annville Twp, West Cornwall Twp, Cornwall Borough, and South Lebanon Twp), and proposed & ongoing projects.

Prepared by the Quittapahilla Watershed Association, June 2018.



Basemap of Quittapahilla watershed taken from Rocky Powell Plate 1 (2006). Purple MS4 area superimposed over basemap adapted from Lebanon County Stormwater Consortium Map (Oct. 2017). Municipal maps superimposed atop these taken from [www.pennidot.gov/ProjectAndPrograms/Planning/Maps/Town%20Boro%20City%20Maps/Pages/TBC-Maps-Lebanon.aspx](http://www.pennidot.gov/ProjectAndPrograms/Planning/Maps/Town%20Boro%20City%20Maps/Pages/TBC-Maps-Lebanon.aspx).

###

Contact: Michael Schroeder, President, Quittapahilla Watershed Association [ . . . ]